

2020 DRCLAS REMOTE SUMMER PROGRAM (RSP)

UPDATED APRIL 10, 2020



**DAVID ROCKEFELLER CENTER
FOR LATIN AMERICAN STUDIES**
HARVARD UNIVERSITY

OVERVIEW

**PROFESSIONAL
ENRICHMENT
OPPORTUNITY**

**VIRTUAL
CULTURAL
CONTENT**

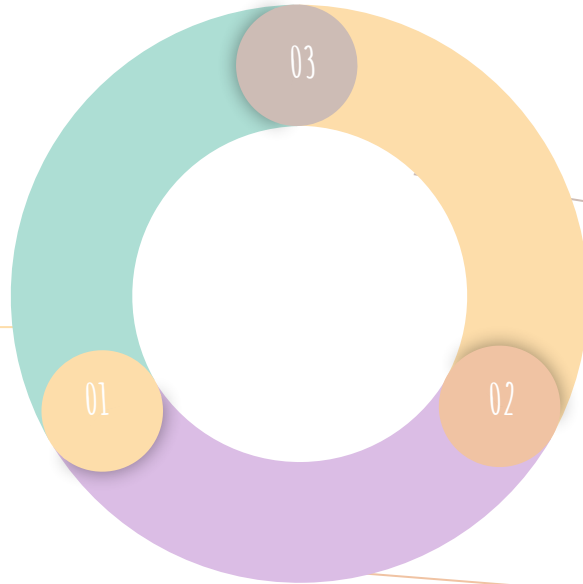
**VIRTUAL
LANGUAGE
PRACTICE**

**NEED-BASED
SUMMER
STIPEND**

*This program is currently being developed by DRCLAS. Student interest, collaborator ability, and evolving challenges from COVID-19 will greatly influence how it is shaped. It may therefore shift in its components and offerings. We appreciate your flexibility as we navigate to build meaningful engagement in our region for students and our partners alike.

RSP STAPLES

PROFESSIONAL
→ MONDAY-THURSDAY
ENGAGEMENT WITH
LOCAL ORGANIZATION
→ SUPERVISOR &
MENTORSHIP



CULTURALLY FOCUSED
→ SEMINARS & ACTIVITIES
ABOUT LATIN AMERICA
→ IN-COUNTRY PROGRAM
CONTACTS & MENTORS

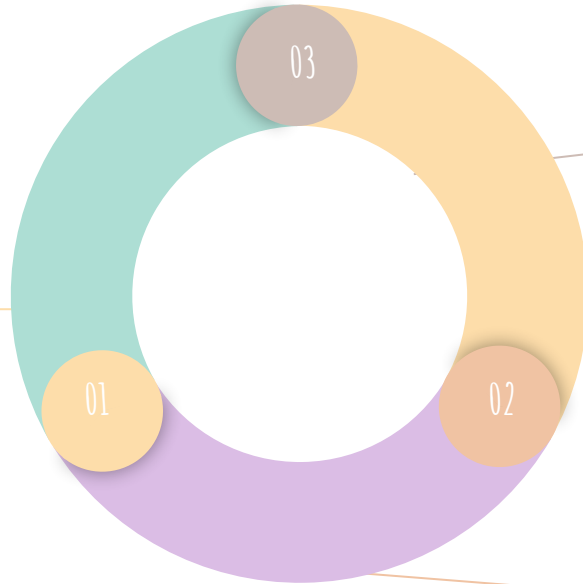
LANGUAGE-INTENSIVE
→ SPANISH & PORTUGUESE
LANGUAGE PRACTICE
OPTIONS

PARTICIPANTS ARE:

RESILIENT

→ AMONG TODAY'S
UNCERTAINTIES,
FLEXIBILITY IS KEY!

→ LESS-STRUCTURE = NEED
FOR CREATIVITY



ADAPTABLE

→ MAINTAINING A POSITIVE
OUTLOOK AND APPROACH IS
A MUST!

PROACTIVE

→ HIGHER LEVEL OF
INDEPENDENCE

→ STUDENTS MUST TAKE
INITIATIVE WITH THEIR
COMMUNICATION

PROFESSIONAL ENRICHMENT

- Open to **previously admitted students** who confirm interest
- Students' original SIP placements will remain first option for the RSP, unless unavailable.
 - Students should expect a different placement, given challenges from COVID19, and remain open-minded.
- Placement is **not guaranteed** for all who demonstrate interest.
 - Students will not be charged a deposit should there not be a placement available to them.
- Students will **virtually contribute** in a meaningful manner.
- Work, tasks, and projects may be different than previously expected.
- Work will take place in either **Spanish, Portuguese, or English**.
- Students will be in regular communication with their internship supervisor.
- Students will submit final deliverables.

CULTURAL CONTENT

- Students will engage in weekly activities with the cohort.
- Cultural sessions work to build a **deeper historical and contemporary awareness of Latin America**.
- Sessions will be coordinated by DRCLAS.
- **Active participation** in sessions is mandatory of all program participants.
- Readings and other preparatory work may be assigned.
- Students are expected to be **fully prepared and engaged** in sessions.
- Students will heavily influence learning outcomes.
- A curious and respectful attitude is a must!
- Cultural programming will vary in the language it is offered.



LANGUAGE PRACTICE



- Participants will have the **option** to practice their language skills, in **Spanish** and/or **Portuguese** outside of work.
- Language-intensive sessions are optional and hosted by DRCLAS managers.
- Breakout sessions may be used across and within languages.
- Students are encouraged to share their interests of any colloquial or specific language goals they may have with staff.



EXAMPLE WEEK AT-A-GLANCE

MONDAY - THURSDAY

- STUDENTS ENGAGE IN REMOTE ENRICHMENT WORK
- REGULAR SUPERVISOR CHECK-INS
- REGULAR DRCLAS GUIDANCE
- FINAL DELIVERABLE
- FLEX SCHEDULE*

*20-25hr/wk, based on assignments & time zones of students & organizations

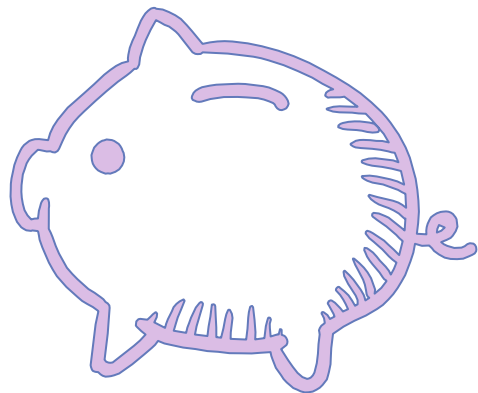
FRIDAY

- DRCLAS-LED CULTURE & LANGUAGE SESSIONS
- Eg: *Comparative Health Care Access in Chile and Mexico, from Urban to Rural Spaces*
- SPANISH & PORTUGUESE COHORT BREAKOUTS
- DRCLAS MANAGER GUIDANCE AND SUPPORT
- STUDENTS HIGHLY INFLUENCE SESSIONS

WEEKENDS

- OPEN SCHEDULE
- STUDENTS MAY BE PROVIDED WITH: MOVIES, BOOKS, EXCERPTS, VIDEOS, ETC. FOR FURTHER LEARNING

FEES & FUNDING



- FEES:

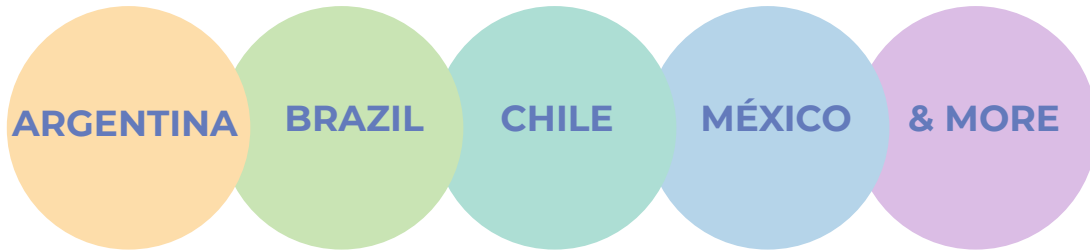
- REMOTE SUMMER PROGRAM REQUIRES A \$50 CONFIRMATION DEPOSIT*
- THERE IS **NO PROGRAM FEE** FOR THE 2020 RSP

- FUNDING OPTIONS:

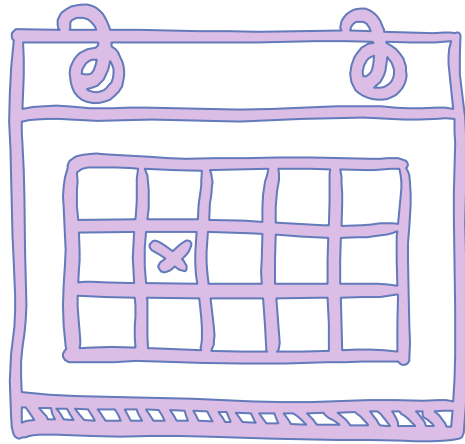
- SUMMER STIPEND
 - NEED-BASED PRIORITY
 - BASED ON FAO'S LEVELS FROM AY 19-20
- NO ADDITIONAL APPLICATION NEEDED

**Only students who confirm participation (at a later date) will be charged the deposit. Demonstrating interest in our initial survey does not count as confirming official participation.*

MAJOR DISTINCTIONS FROM SIP



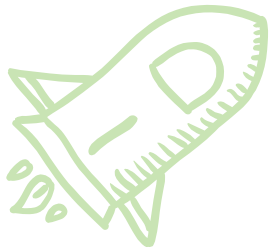
- PROGRAMMING IS **LATIN AMERICA WIDE** FOR ALL PARTICIPANTS
- ALL ENGAGEMENT, SESSIONS & ACTIVITIES ARE **REMOTE / VIRTUAL**
- ENRICHMENT OPPORTUNITIES AND PROJECTS ARE DISTINCT FROM INTERNSHIPS
- **NO PROGRAM FEE** FOR REMOTE SUMMER PROGRAM
- NO IN-COUNTRY TRAVEL PERMITTED DURING SUMMER 2020
- NO COLEGIO DE MÉXICO STUDY ABROAD PROGRAM
- THE RSP IS **UNDER CONSTANT DEVELOPMENT** & WILL BE RESPONSIVE TO CURRENT & ANY NEW CHALLENGES IMPACTING THE GLOBE



DEADLINE



CONFIRM YOUR
INTEREST BY
APRIL 17



*Formal program confirmation will be
required once placements have been
identified at a later date*

SUGGESTIONS? QUESTIONS?



RACHEL
MURRAY-CRAWFORD
rachelmurray@fas.harvard.edu



