

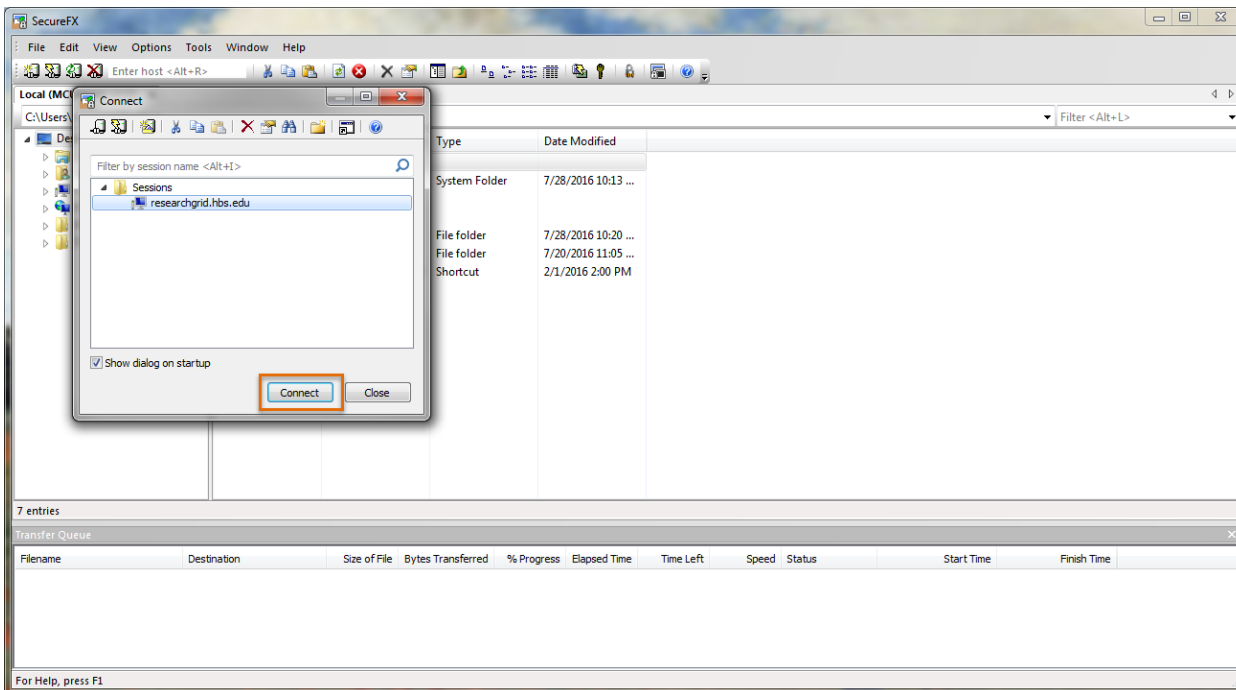
SecureFX

Connecting to the Grid & Transferring Files from your Computer to the Grid

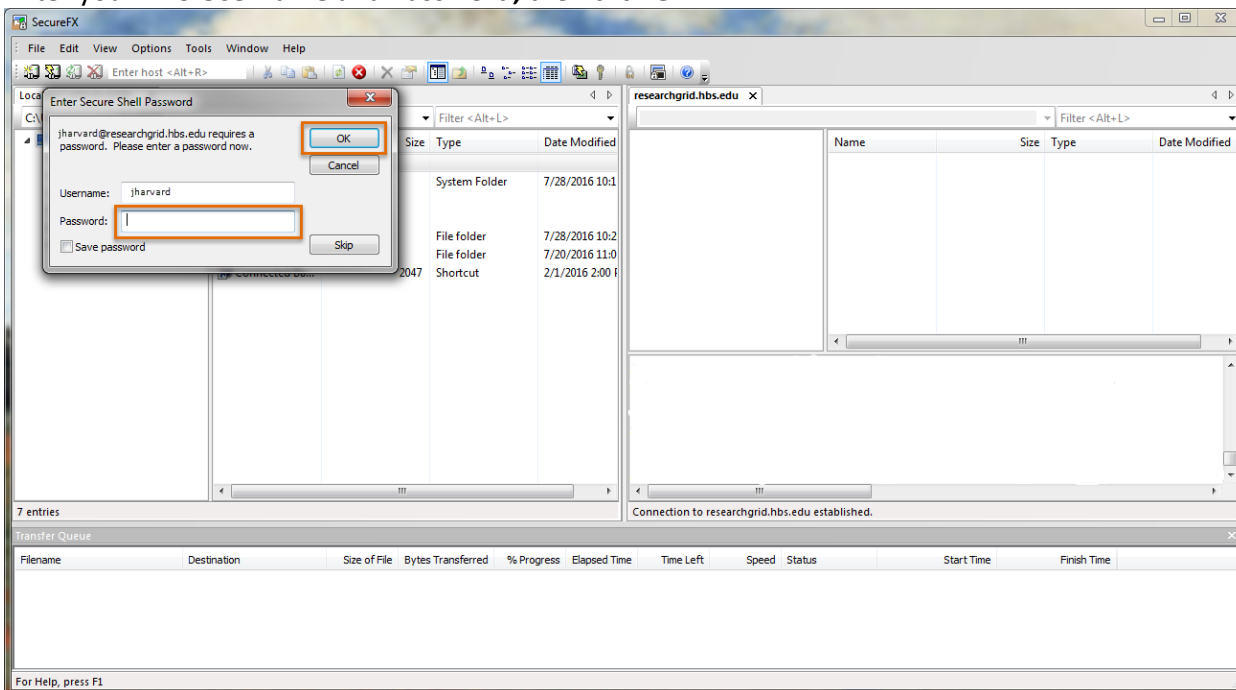
– Connecting to the Grid –

Open **SecureFX** on your machine (SecureFX is preinstalled on HBS machines)

Click **Connect**



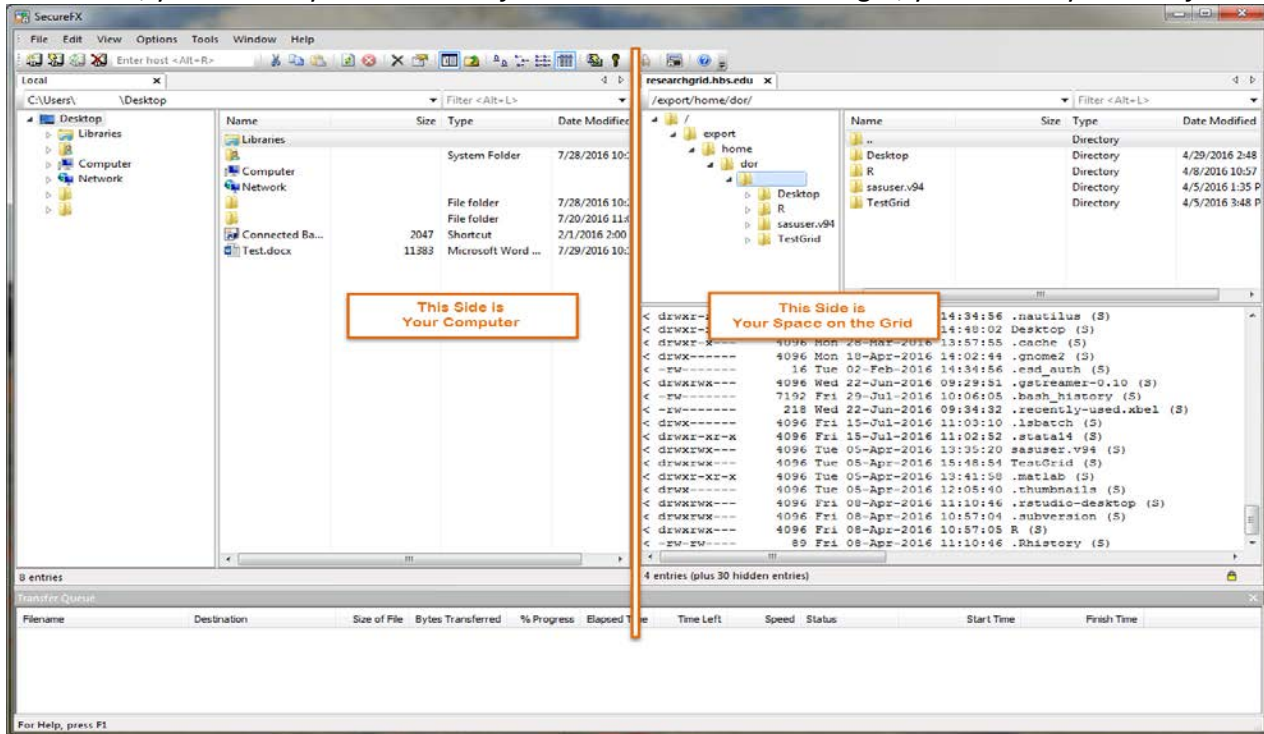
Enter your HBS **Username** and **Password**, then click **OK**



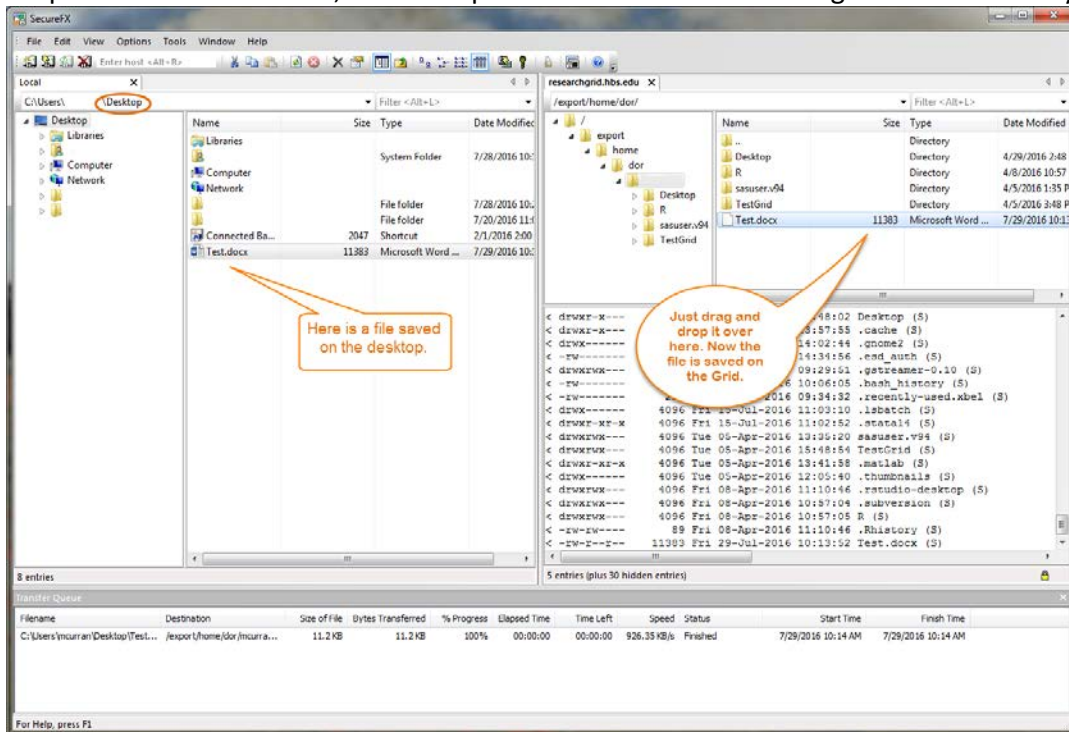
– Transferring Files to the Grid –

On the left, you will see your *machine's files*

On the right, you will see your *Grid files*



Open the appropriate Grid folder (right side) you want to save your file to
Then select the file you want to transfer (left side) drag to the right upper corner box and release your mouse to drop the file onto the Grid; the same process works for transferring from the Grid to your machine



You can now access your files on the Grid
When finished, click **File** and then **Exit**