

Cyberduck

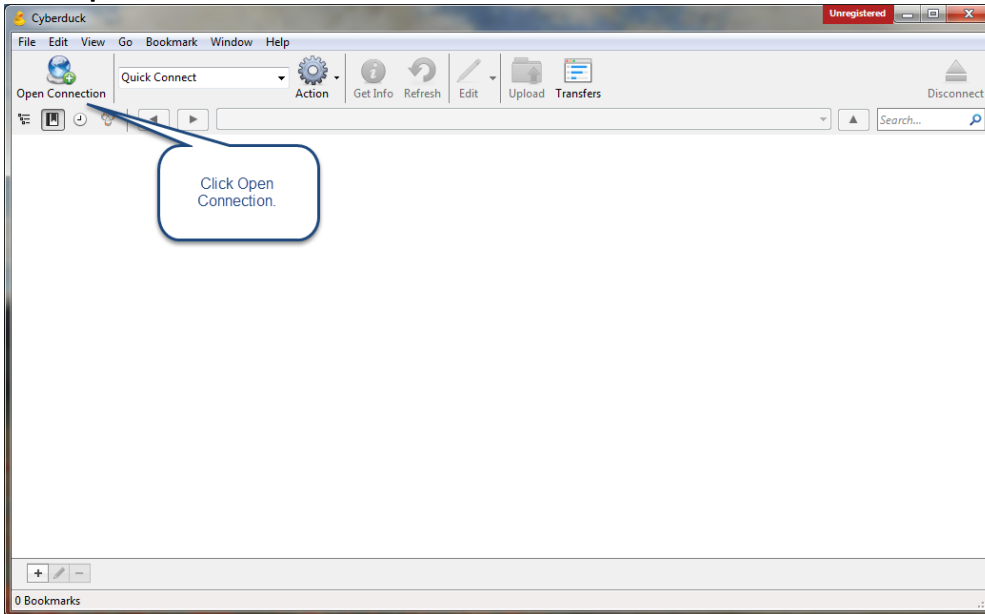
Connecting to the Grid & Transferring Files from your Computer to the Grid

Download and install Cyberduck: <https://cyberduck.io/?l=en>

–Connecting to the Grid –

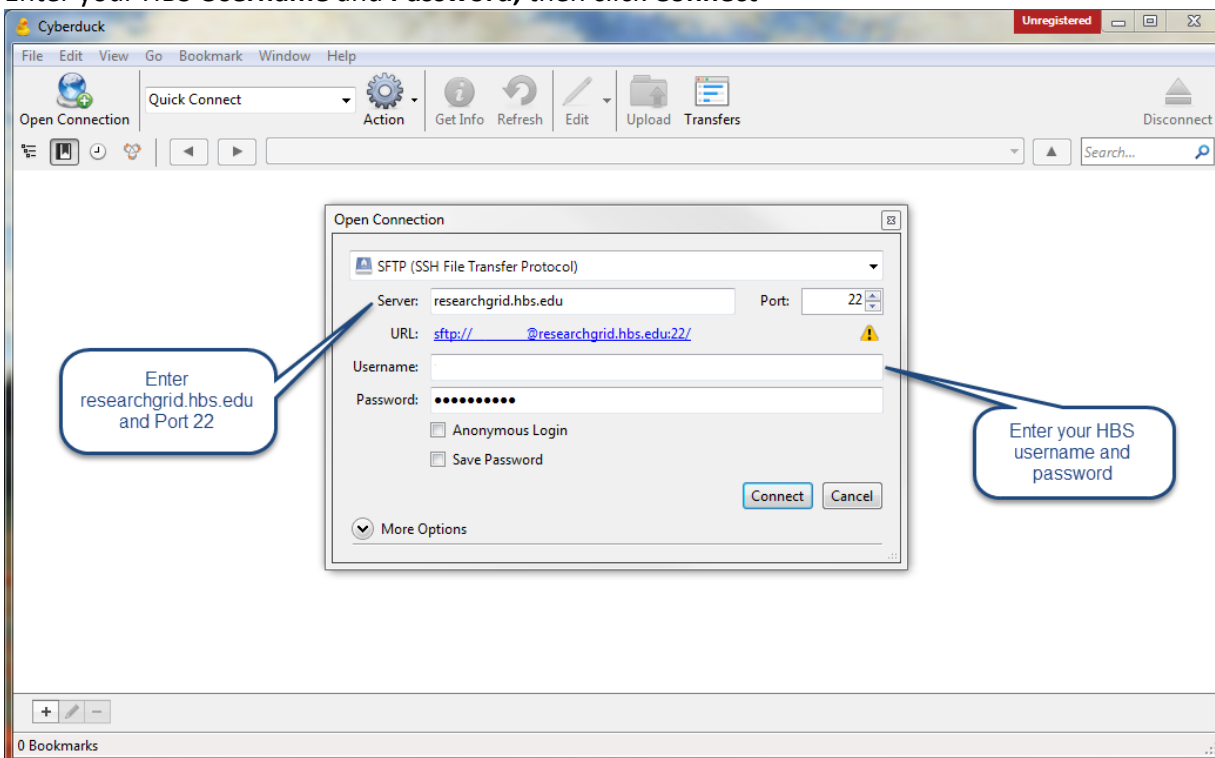
Open **Cyberduck** on your machine.

Click **Open Connection** to connect to the Grid.

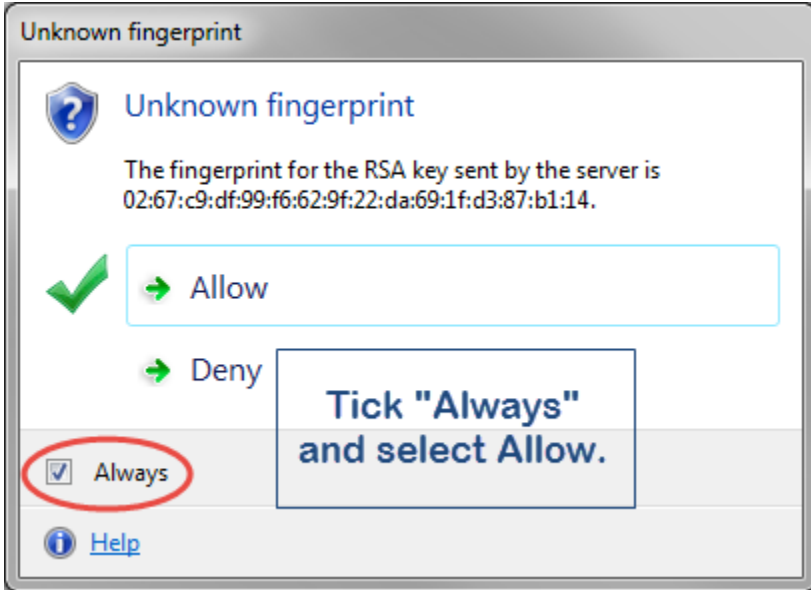


For **Server**, enter *researchgrid.hbs.edu* and for **Port**, enter **22**

Enter your HBS **Username** and **Password**, then click **Connect**



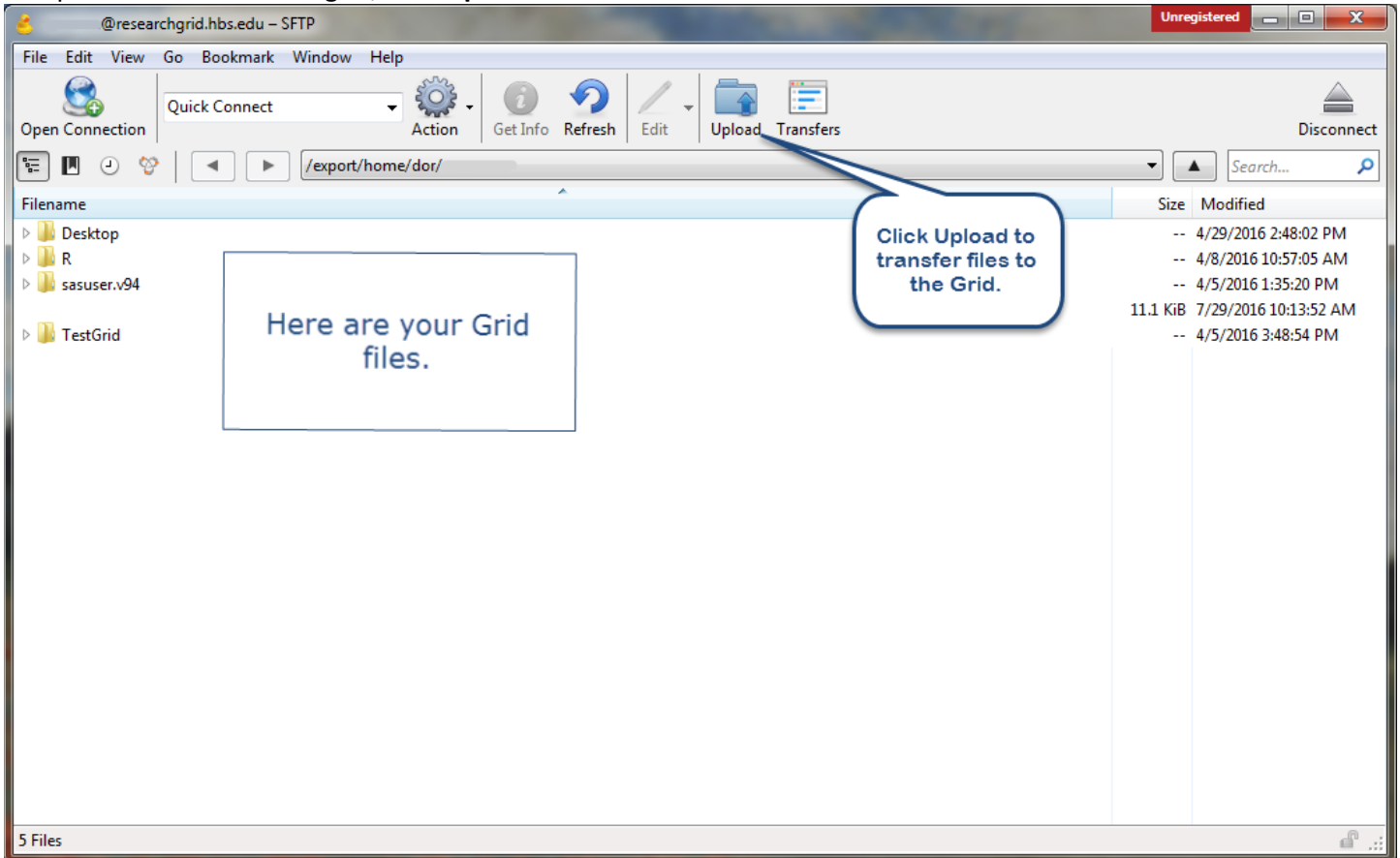
The “Unknown Fingerprint” window may pop-up, tick **Always** and **Allow**
(This window asks to verify identity of the server you are logging in to)



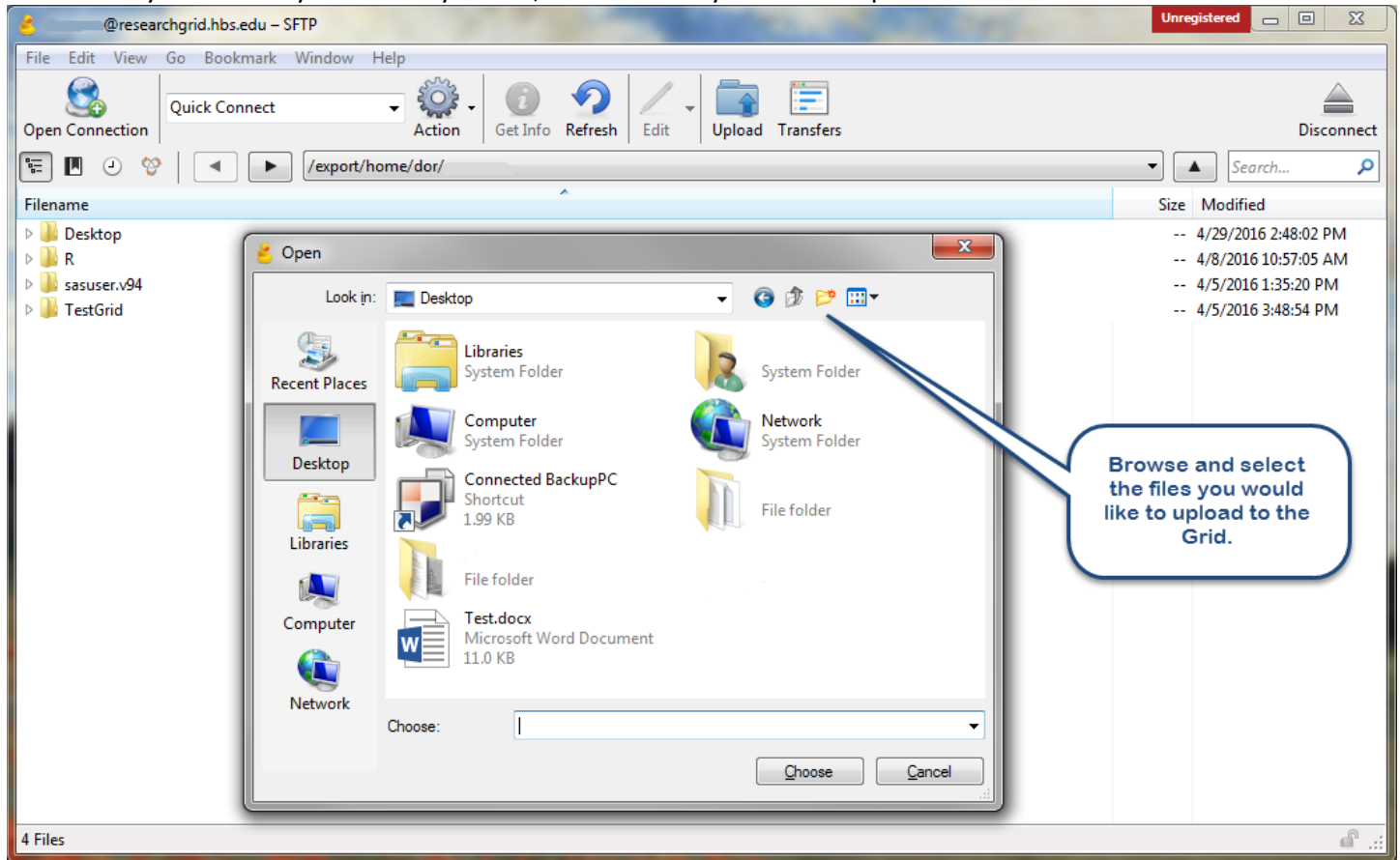
You are now connected to the Grid

–Transferring Files to the Grid –

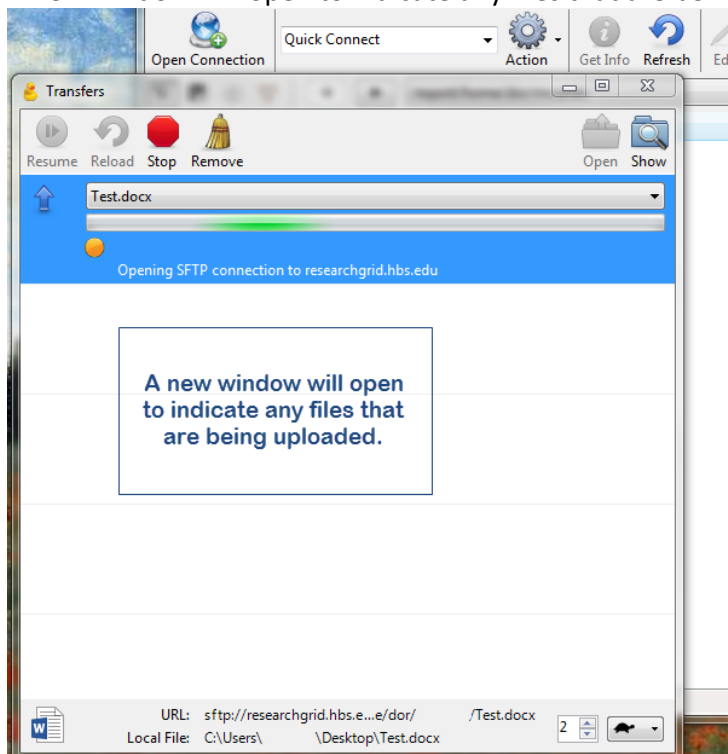
To upload new files to the grid, click **Upload**



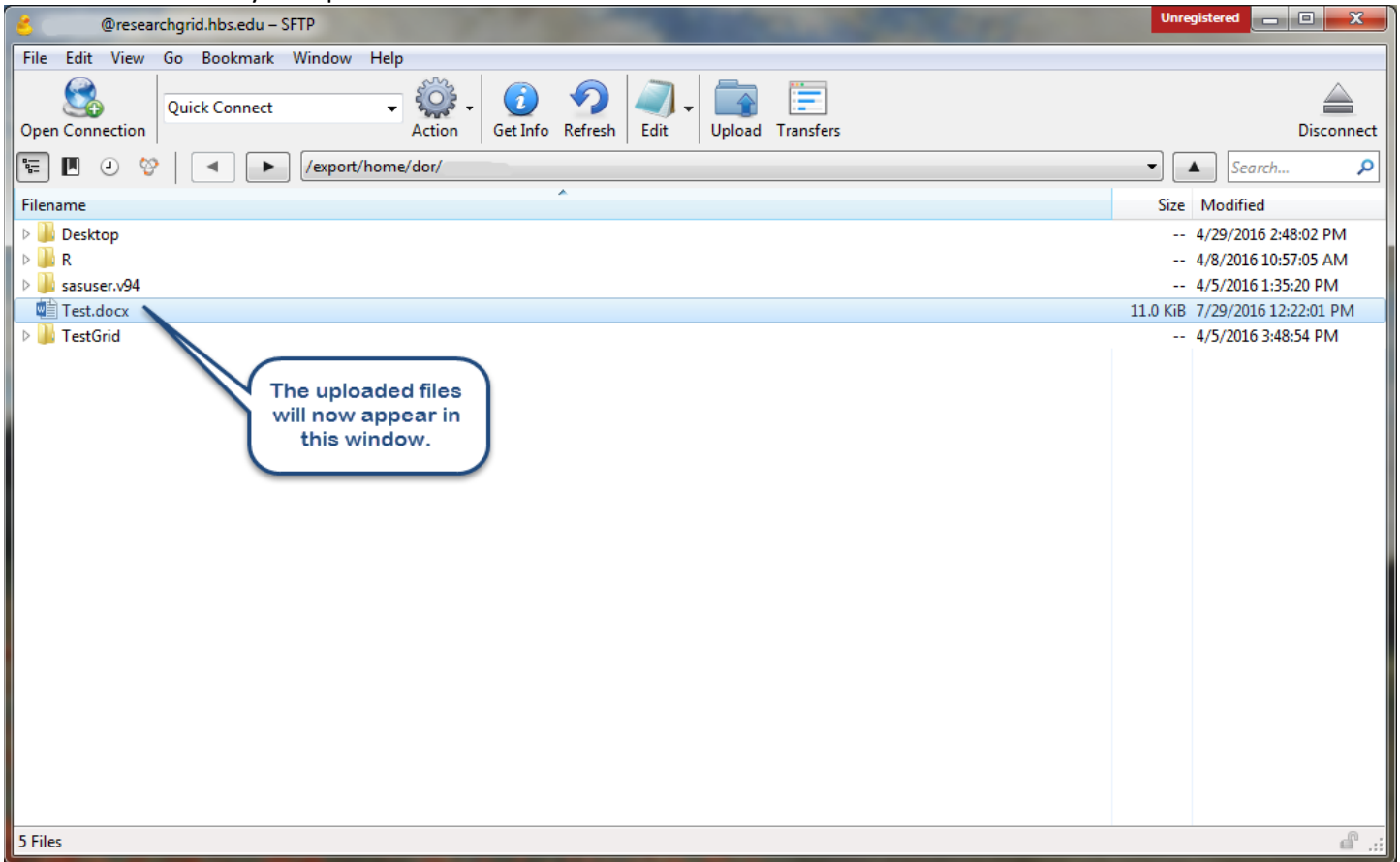
Browse for your files as you normally would, click the files you wish to upload and click **Choose**



A new window will open to indicate any files that are being uploaded



You can now access your uploaded files on the Grid



When finished, click **Disconnect**

